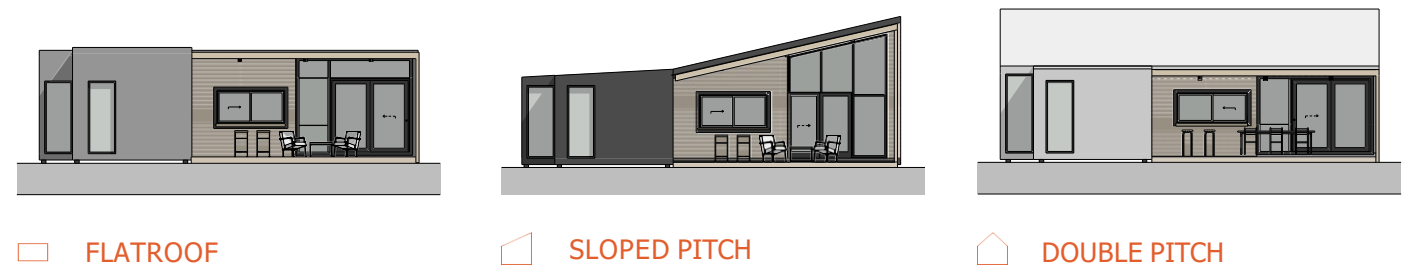




# Family Hub — 63m<sup>2</sup>

88m<sup>2</sup> with a deck



□ FLATROOF

▱ SLOPED PITCH

⌠ DOUBLE PITCH

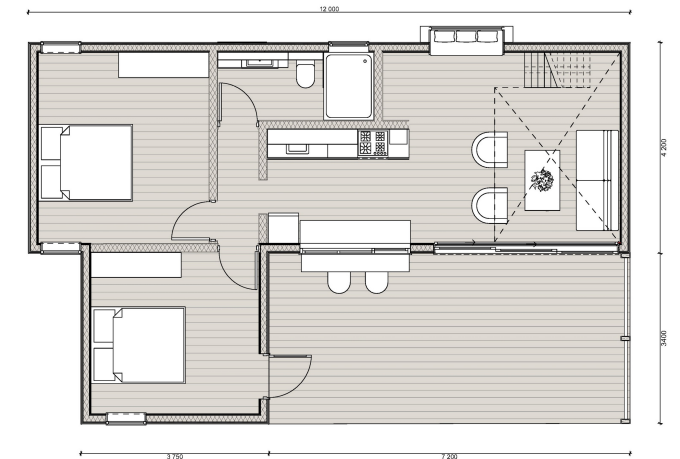
## SAMPLE FLOOR PLAN

Depending on which model and optional extras you choose, the floor plan will change accordingly.

Manufacturing time: +/- 8 weeks

Assembly time: ± 12 weeks

*From ZAR 1 420 000 ex VAT*



# Family Hub

— 63m<sup>2</sup>

**Our stylish Family Hub is a beautiful 2-bedroom unit that can comfortably sleep 4-6 people.**

**It is a dream come true for a guest cottage or family home and is just as comfortable and feature-packed as a traditional home.**

## What's included:

- Timber frame structure
- SPC click vinyl flooring
- Interior walls: skimmed and painted rhino board
- Ceiling: limewashed Spruce ceiling
- Exterior walls: Colorbond metal sheets concealed and fixed with thermo-treated timber features
- Roof: Diamondek roof cover with gutters
- Cube insulation above SANS requirements
- Aluminium single-glazed windows, glass front
- Kitchen, incl interior breakfast counter
- Fitted bathroom with WC and shower
- Two bedrooms with bedroom cupboards
- Architect drawings for the standard design
- Electrical and plumbing COC certificates
- Engineering approved for the standard structure
- Standard foundation incl engineer approval
- Delivery with truck and crane (allowance)

## Optional Extras:

- + Mezzanine
- + 25m<sup>2</sup> hardwood decking
- + Pergola
- + Bay window
- + Exterior breakfast counter
- + Fireplace
- + Off-grid options
- + Bespoke finishes

## What's excluded but can be quoted:

- Site preparation
- Connection to mains
- Plan approval from local municipalities