



Entertainer

_45.5m²

This beautifully designed 1-bedroom unit can comfortably fit up to four people and is perfect as a guest cottage, granny flat, or even a home.

The smart layout ensures that going small does not mean compromising comfort, style, or luxury.

Entertainer — 45.5m² 62.5m² with a deck



□ FLATROOF

▱ SLOPED PITCH

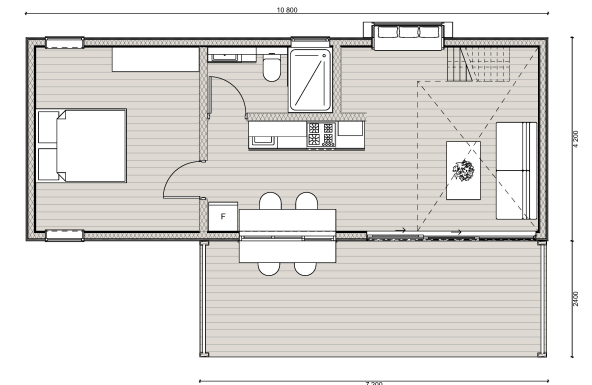
⌠ DOUBLE PITCH

SAMPLE FLOOR PLAN

Depending on which model and optional extras you choose, the floor plan will change accordingly.

Manufacturing time: ± 6 - 8 weeks
Assembly time: ± 8- 12 weeks

From ZAR 1 125 000 ex VAT



What's included:

- Timber frame structure
- SPC click vinyl flooring
- Interior walls: skimmed and painted rhino board
- Ceiling: lime-washed spruce ceiling
- Exterior wall: Colorbond metal sheets concealed and fixed with thermo-treated timber features
- Roof: Diamondek roof cover
- Cube insulation above SANS requirements
- Aluminium single glazed windows, glass front with sliding door
- Kitchen incl. interior breakfast counter
- Fitted bathroom with WC and shower
- One bedroom with bedroom cupboard
- Architect drawings for the standard design
- Electrical and plumbing COC certificates
- Engineering approved for the standard structure
- Standard foundation incl engineer approval
- Delivery with truck and crane (allowance)

Optional Extras:

- + Mezzanine
- + 17m² hardwood decking
- + Pergola
- + Bay window
- + Exterior breakfast counter
- + Fireplace
- + Off-grid options
- + Bespoke finishes

What's excluded but can be quoted

- Site preparation
- Connection to mains
- Plan approval from local municipalities